



UNA-CLAD™ SERIES 1200 Composite Wall Panel System

DESCRIPTION:

The UNA-CLAD™ Series 1200 panel system is designed to utilize an Architectural Composite Material (ACM) face skin. A variety of material and finish options are available. The Series 1200 uses rout-and-return fabrication methods with mechanically fastened extruded perimeter frame. The panels are then mounted to the wall with a custom snap on and slide attachment clip. An ACM spline infill piece at the panel to panel joints allows for variance in color and joint size. The Series 1200 panel system is designed as a low cost water managed system that controls the impact of wind driven rain on exterior walls. The weather resistant barrier system behind the cladding allows air pressure to be transmitted through the panel system by way of vented openings in the panels, preventing wind driven rain from entering the wall cavity.

METHOD OF APPLICATION:

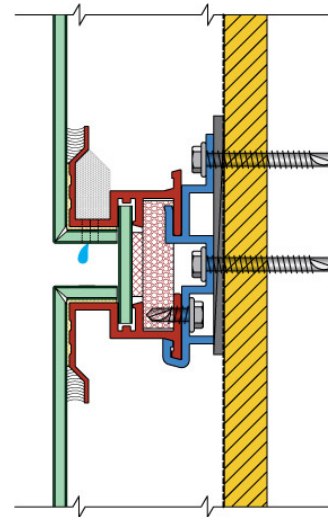
1. Attachment of panels to a system of subgirts or direct attachment to a smooth, solid substrate of plywood is recommended.
2. Firestone Series 1200 must be installed in a sequential pattern.
3. Application of a Firestone approved weather resistant barrier prior to panel installation is required.
4. Panel installation with the Firestone snap clip allows for thermal movement and minimizes time needed to mechanically attach clips in the field. Note: Install assembly according to Firestone Metal design and Application Guides found on the Firestone website. Follow approved shop drawing installation details.

STORAGE:

1. Stored in a well ventilated, dry place where no moisture can contact the panels. Moisture (from rain, snow, condensation, etc.) trapped between layers of material may cause water stains or white rust, which can affect the service life of the material and will detract from its appearance.
2. If outdoor storage cannot be avoided, protect the panels with a ventilated canvas or waterproof paper cover. Do not use plastic, which can cause condensation. Keep the material off the ground in an inclined position with an insulator such as wood, or keep panels crated. Protective film may degrade or become brittle with exposure to direct sunlight.

PRECAUTIONS:

1. Oil canning is not a cause for rejection.
2. Exercise caution when lifting, moving, transporting, storing or handling Firestone metal to avoid possible physical damage.
3. Immediately remove protective film after installation.



PRODUCT DATA

| | |
|--------------------------------|---|
| Panel Type: | Composite Wall Panel |
| Material Options: | 4-mm and 6-mm material thickness |
| Color: | More than 53 standard colors available through a network of ACM Suppliers |
| Finish: | Kynar 500®/Hylar 5000™ high performance fluorocarbon resinous coatings |
| Optional Finish: | Anodized Natural Metals |
| Sealant: | Perimeter Sealant Dow 756 with primer or Mumentive SCS2000 with primer |
| Clip: | Snap-on Slide Clip |
| Substrate: | Subgirt System or Plywood |
| Standard Panel Surface: | Smooth |

PANEL SIZE

| | |
|---------------------------|-------------------|
| Max Panel Width: | 60" (1,524 mm) |
| Min. Panel Width: | 6" (152.4 mm) |
| Max Panel Length: | 144" (3,657.6 mm) |
| Min. Panel Length: | 6" (152.4 mm) |

TECHNICAL INFORMATION SHEET

2008
03/01/08



UNA-CLAD™ SERIES 1200 Composite Wall Panel System

TECHNICAL INFORMATION

| | |
|---|---|
| Air Infiltration: | ASTM E283-91 |
| Structural Performance: | ASTM E330-93 |
| Water Penetration: | ASTM E331-93 |
| Dynamic Water Penetration Test: | AAMA 501.1-83 |
| Bond Integrity: | ASTM D1781-76* |
| Bond Durability: | ASTM C481 Cycle B* |
| BOCA Evaluation: | No 93-57* |
| Fire Resistance: | ASTM E84 Class "A" Rating* |
| Vibration / Sound Dampening: | ASTM E756-83* |
| ICBO Evaluation Report: | No PCF-4909* |
| New York City MEA: | 75-91-M, 390-99-M* |
| Los Angeles Research Report: | RR 25121, RR 25285* |
| State of Wisconsin Approval | #990033-1* |
| SBCCI PST & ES1 Report | #9509* |
| STC Sound Transmission Coefficient | ASTM E90* |
| Finish Testing Available: | Contact FSMP for Technical Information Sheets on Finishes |

Manufacturing Facilities: Anoka, MN
Reno, NV

This sheet is meant only to highlight Firestone's products and specifications. Information subject to change without notice. Firestone takes responsibility for furnishing quality materials, which meet Firestone's published product specification. As neither Firestone itself nor its representatives practice architecture, Firestone offers no opinion on, and expressly disclaims any responsibility for the soundness of any structure on which its products may be applied. If questions arise as to the soundness of a structure, or its ability to support a planned installation properly, the Owner should obtain opinions of competent structural engineers before proceeding. Firestone accepts no liability for any structural failure or for resultant damages, and no Firestone representative is authorized to vary the disclaimer.

*Testing on ACM materials available through network of ACM manufacturers.

Firestone Metal Products Company, LLC
A subsidiary of BFS Diversified Products, LLC
1001 Lund Blvd. Anoka, MN 55303
Phone: 763-576-9595 • Fax: 763-576-9596
Toll Free: 800-426-7737
<http://www.unaclad.com>